



# Surfacing Digital Safeguarding Data

---

DIGITAL DEVICES AS A WINDOW  
TO SELF-HARM, VIOLENCE AND  
BULLYING

Lightspeed is dedicated to providing time-saving solutions and empowering schools to focus where it matters most—  
**students and learning.**

**25M+**

Students  
Protected

**11M+**

Devices  
Protected

**28K+**

Schools Served  
Globally

**41+**

Countries







# The First Guard Rail

## Content Filter & Reporting



**The Pioneer WebContent Filter for Education**  
Protecting students from harmful content anywhere, anytime.



Mature

Lockouts

Overridable

Access Denied

Websites that present a login page

Mature

Mature products, services, situations and humor. Sale of lingerie, sex toys, mature videos. Nudity that is not pornographic nor art. Sites that have non-existent or ineffective user controls to prevent children from accessing mature materials.

Mature - Art

Art that contains nudity or mature activity

Mature - Body Art

Body art, tattoos, body piercings, body mscarification, body painting

Mature - Games

Sex games, games containing mature lar situations or humor whether online or bo

Mature - Language

Strong language, profanity

Social media

Block or allow access to popular social media platforms.

Locko...Overridable...Read only

Facebook

X (formerly Twitter)

Pinterest

Instagram

Angie G Gables

OverviewWebsite historyRulesDetailsMore

Browsing activity

Sep 9, 2024 - Sep 15, 2024

Top activities

View all

Notices

228 Flags	23 Blocked searches	83 Blocked websites
-----------	---------------------	---------------------

Top websites

www.google.com  
accounts.google.com  
www.powerschool.com

Top searches

abcya  
shakespeare as you like it  
biggest battle of ww2

Internet overview

Sep 9, 2024 - Sep 15, 2024

248.2K Website visits  
44.9K Website blocks  
465 Search blocks  
2.2K Flags

Top activities

Top websites	Visits	Top groups	Visits
www.google.com	8.6K	Google	300.9K
accounts.google.com	5.7K	Mrs. Thompkins - Grade 6 Math	300.9K
www.youtube.com	4.0K	Lightspeed Middle School	300.9K
www.powerschool.com	2.5K	Ms. Lawrence - Grade 6 Literature	210.8K
www.pearson.com	2.4K	Students-without-alerts	192.8K
mail.google.com	2.2K		

OverviewWebsite historyRulesDetailsMore

Blocked

Sep 9, 2024 - Sep 15, 2024

9-15 11:49 PM	s.amazon-adsystem.com/iu3	Mature Category	216.137.67.17
9-15 11:43 PM	sync.1rx.io/usersync2/pubmatic...	Security Category	216.137.67.17
9-15 11:43 PM	csync.loopme.me/	Forums - Social ... Category	216.137.67.17
9-15 11:43 PM	s.amazon-adsystem.com/dcm	Mature Category	216.137.67.17
9-15 11:43 PM	p.rflhub.com/cm	Security - Malwa... Category	216.137.67.17
9-15 11:43 PM	outlook.office.com/	Microsoft Category	216.137.67.17
9-15 11:31 PM	www.poker.com/	Gambling Category	216.137.67.17

- Blocking inappropriate websites
- Allowing appropriate websites
- Group & user internet usage trends
- Granular and detailed user reports



# The Second Guard Rail

## Proactive Monitoring



Lightspeed Alert™

**Detect early warning signs of self-harm, bullying, violence, explicit content and drugs related concerns, accurately and in real-time**

**67% of students**  
gave out clear warning signs

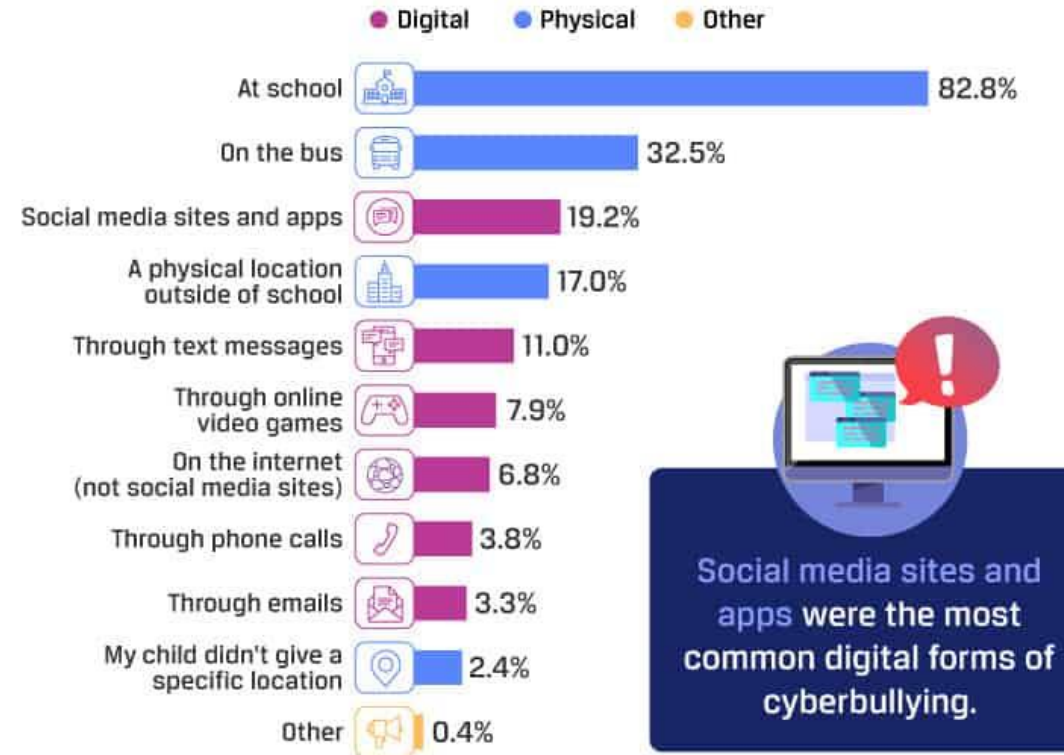
**20%+ teens**  
have seriously considered  
suicide

**Over 200 students**  
in the UK are lost to suicide  
every year





## LOCATIONS WHERE KIDS REPORTED BULLYING HAPPENED

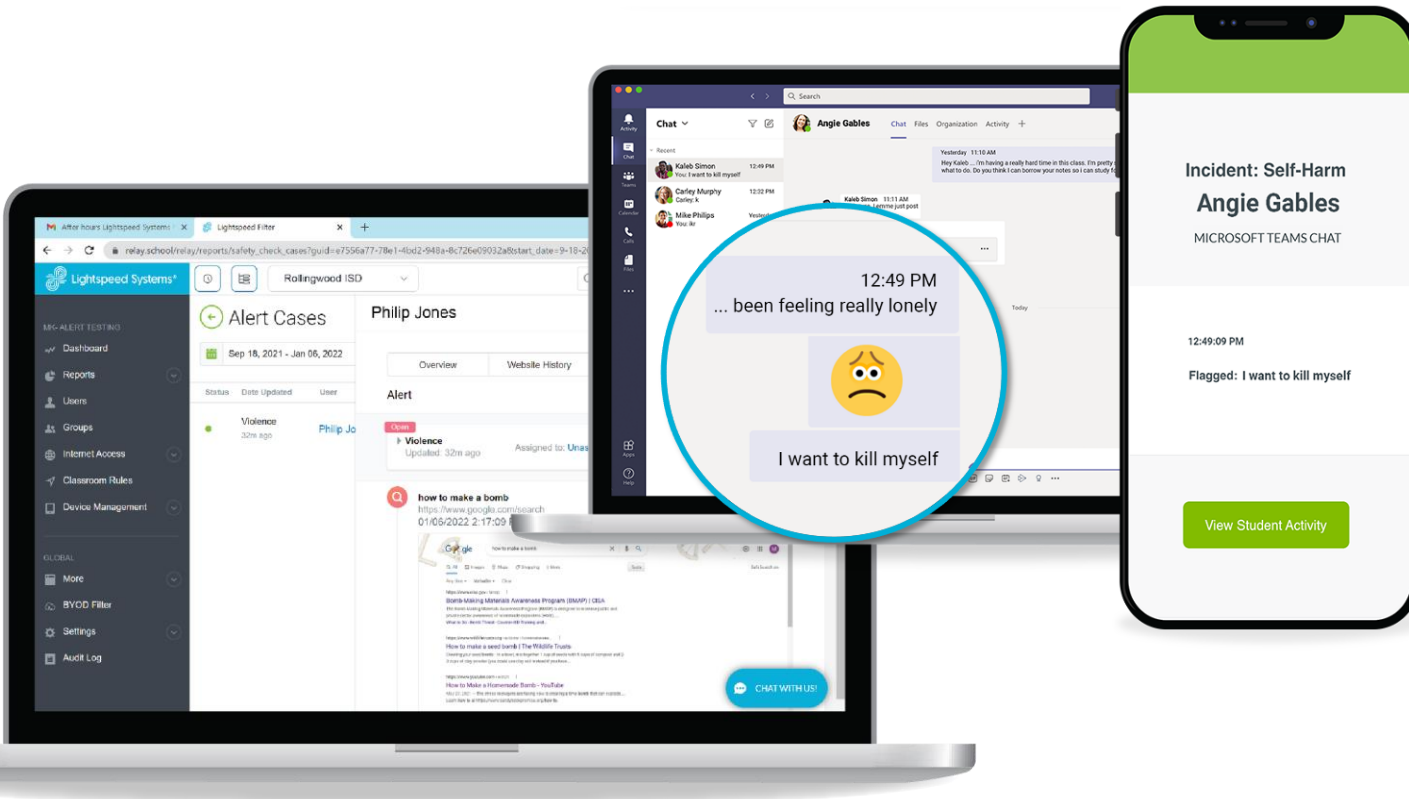


Source: Survey of 1,011 parents

*comparitech*



# What to look for in a Proactive Monitoring solution



## Sophisticated AI

Powerful AI monitors and analyses student online activity for signs of self-harm, violence, and bullying, flagging concerning behaviour for proactive intervention.

## Comprehensive coverage

See a large breadth of student online activity, including web browsers, social media, YouTube, and Microsoft 365 and Google productivity apps.

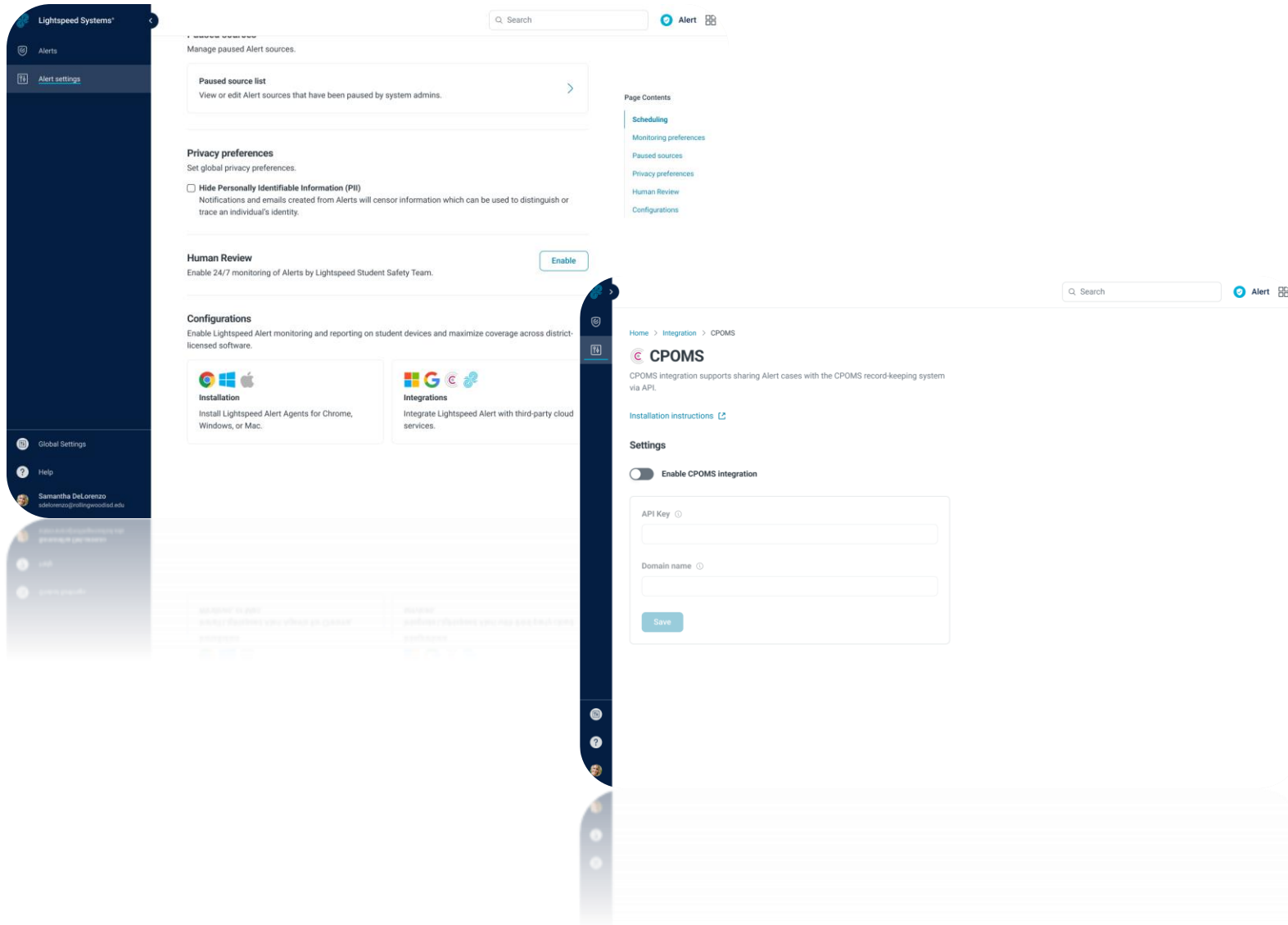
## Context for quick decisions

Empower staff with context around alerts, including student web history, to make quick decisions and intervene if necessary



The screenshot displays a web application interface. On the left, the 'Alert Cases' section shows a table with columns 'Status', 'Date Updated', and 'User'. A single entry is visible: 'Self-Harm' with a green status dot, updated on '11/01/22', and assigned to 'Kaleb Smith'. Below this is a Google search bar with the query 'how long does it take to hang yourself'. The search results show 'About 331,000,000 results (0.49 seconds)' and a link to 'Help is available' from the '988 Suicide and Crisis Lifeline'. At the bottom left, there are buttons for 'Chat' and 'Official Website', and a text input field with 'SMS: 988'. On the right, a user profile for 'Kaleb Smith' is shown with tabs for 'Overview', 'Website History', 'Rules', 'Details', and 'More'. The 'Overview' tab is active, displaying an 'Alert' section with '3 of 3' items and a 'VIEW ALL' button. Below the alert, two search results are listed, both for the query 'how long does it take to hang yourself'. The first result is from 'Google Search' with a URL and timestamp. The second result is from 'Google' with a URL and timestamp. Below the search results, a smaller version of the Google search results page is visible, showing the same search query and results.

Can I see the full picture?



Does it integrate with other safeguarding platforms such as CPOMS?



## Escalation list

1



\*Indicates required field

Name\*

Robert Woods

Title\*

Assistant Superintendant

Email\*

robert.woods@rollingwood.net

Office phone

+1

(267) 673-1363

Mobile phone\*

+1

(267) 567-5265

Preferred contact

☒ Phone

☐ Text (SMS)

☐ Email



Lightspeed Safety Specialist identifies an imminent threat and follows the escalation list.



Contacts district staff via phone and email

Can I also rely on safeguarding experts to proactively make me aware of concerns out of hours?





