

@OptimusEd

#oeMATs

MATSummit.co.uk



**Ensure you're a financially sustainable trust, establish yourself as an employer of choice and cement trust connections to further your impact.**

9<sup>TH</sup> ANNUAL EVENT



**MATs SUMMIT 2024**

IMPACT | STRATEGY | VISION

27 NOVEMBER – 29 NOVEMBER 2024

WYBOSTON LAKES RESORT

# Welcome

Welcome to the MATs Summit 2024. We're delighted to see you!

Meet your chair:

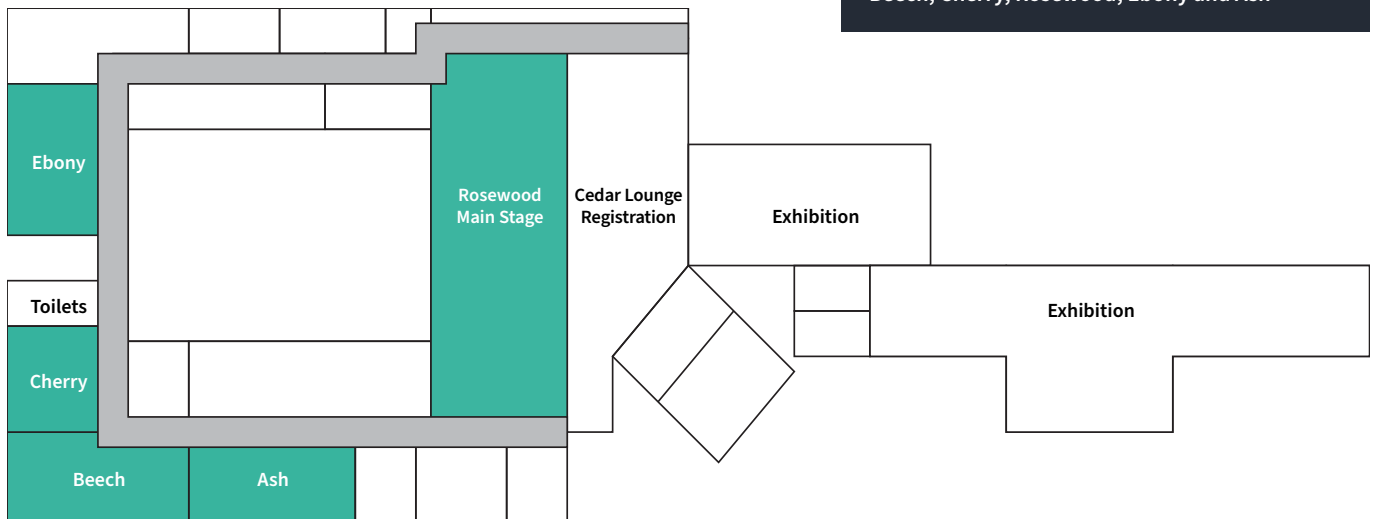


**Laura McInerney**  
Education Journalist and Founder,  
Teacher Tapp

Copies of all speaker slides can be accessed here:

[View speaker slides >>](#)

## Floorplan



## Our exhibitors

We are excited to introduce our exhibitors for the conference, each showcasing innovative solutions and industry-leading expertise. These organisations bring a wealth of knowledge and products that will inspire and elevate your experience. Be sure to visit their stands and discover the latest advancements they have to offer.

[View our exhibitors >>](#)

## Our partners

Helping us to deliver our services to thousands of educational establishments, our partners are experts in professional development and school improvement. We handpick the best education suppliers to collaborate with.

Here are the organisations we're proud to call our partners.

[View our partners >>](#)

# Programme

## Wednesday 27 November 2024

19:00 – 22:00 Drinks reception in Rosewood

## Thursday 28 November 2024

08:45 – 09:15 Conference registration in the Cedar Lounge

09:15 – 09:40 Networking and coffee in the exhibition space

09:40 – 09:45 **Welcome and housekeeping**  
*Optimus Education*

09:45 – 10:00 **Chair's introduction and welcome**  
*Laura McInerney, Education Journalist and Co-Founder, Teacher Tapp*

10:00 – 10:30 **My top five tips for MAT leaders**  
Take away insight from more than 10 years of executive experience, including what pitfalls you might encounter, and how to overcome them.  
*Jon Chaloner, Leadership Adviser and Former CEO, GLF Schools*

10:30 – 11:00 **Revisoning trusts in a digital and AI infused landscape**  
Take away practical next steps to support your trust with insights and lessons from those at the forefront of digital and AI in schools, and catch up on the latest trends in the sector.  
*Dr. Fiona Aubrey-Smith, Founder, PedTech*

11:00 – 11:10 Q&A

11:10 – 11:50 Morning refreshments and networking with exhibitors

### 11:50 – 12:40 Workshop choices one

**1A – Cherry**  
**Intelligent growth**  
Explore the challenges of growth and ensure that you are growing from a child and community-centric perspective.  
*Jon Chaloner, Leadership Adviser and Former CEO, GLF Schools*

**1B – Rosewood**  
**MAT-wide accelerated and sustained impact**  
Implement a deliberate and structured approach to school improvement, including curriculum and assessment codification, a unique teaching and learning framework, and live-coaching in the classrooms.  
*Shofiquez Zaman, Deputy CEO, Community Schools Trust*

**1C – Ebony**  
**Recruitment: what can you offer?**  
Establish yourself as an employer of choice with recruitment strategies that are attractive and cost-efficient.  
*Mandy Coalter, Founder, Talent Architects*

**1D – Ash**  
**Financial strategy**  
Implement and maintain a viable financial strategy to ensure your trust thrives despite a difficult economic landscape.  
*Stephen Mitchell, CEO and Founder, Keystone Knowledge*

**1E – Beech**  
**What staff really think of school trusts: insights and improvements**  
Foster stronger staff engagement and sense of community as you explore how staff perceptions of trust membership have changed over five years.  
*Gavin Booth, CEO, Infinity Academies*  
*Ernest Jenavs, CEO, Edurio*

12:40 – 13:40 Lunch and networking with exhibitors

13:40 – 14:10 **Surveying the political landscape**  
*Lord David Blunkett, Former Labour Home Secretary*

14:10 – 14:25 Q&A using Slido, #oeMATs

14:25 – 15:00 **Sensible and affordable staff retention strategies**  
Retain staff and develop your next leaders with a robust people strategy that works on the ground and ensures you're a more attractive employer.  
*Mandy Coalter, Founder, Talent Architects*

15:00 – 15:10 Q&A using Slido, #oeMATs

15:10 – 15:30 Afternoon refreshments and networking with exhibitors

Programme continued ►

# Future Proof Your Workforce Workshop

Supporting Education Group is a leading solution provider for the education sector, partnering with over **90% of Multi-Academy Trusts (MATs) in England.**

Join Penny Swain, Director at Supporting Education Group, Anna Smee, Managing Director of Thrive, and Michael McCarthy, CEO of Consilium Academies Trust, for an insightful session. Together, we will explore the evolving global workforce and its impact on the education profession and your MAT.

**When:** Thursday 28th November, 3.30pm

**Where:** MATs Summit



**Penny Swain**

Partnership Development Director, SEG



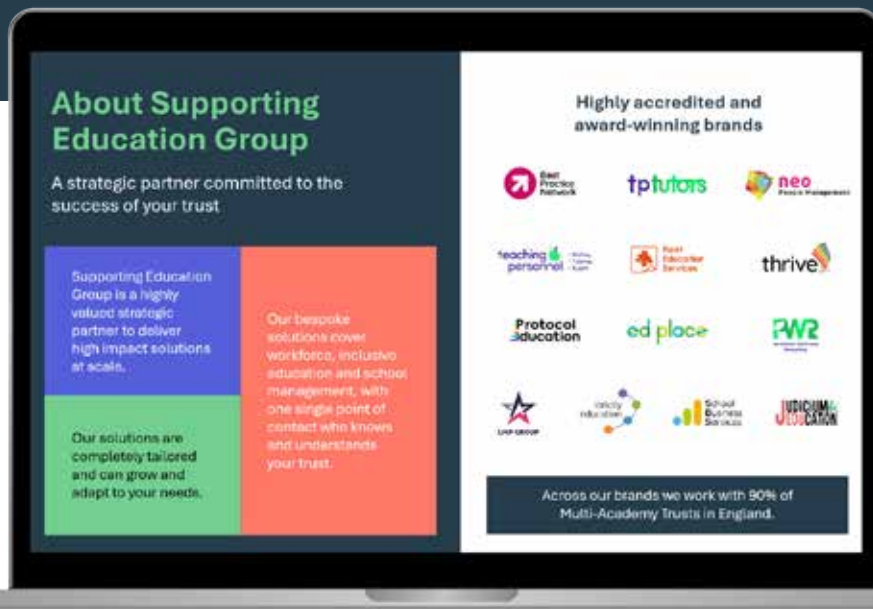
**Anna Smee**

Managing Director, Thrive



**Michael McCarthy**

CEO, Consilium Academies Trust



"With **80%** of school budgets dedicated to staffing, and our greatest challenges rooted in people, are we truly investing enough, financially, strategically and emotionally, in our staff?"

# Programme

## 15:30 – 16:20 Workshop choices two

### 2A – Ash

#### Centralisation of finances and budget pooling

Effectively centralise your finance strategy during growth, from winning hearts and minds through to the practical implementation.

*Sean Pinhay CFOO,  
Simon Hague, CEO, Crofty Education Trust*

### 2B – Rosewood

#### Deepen your inclusive provision

Increase inclusivity and expertise across your trust by collaborating with specialist provision.

*Rachel Quick, Interim Trust CEO, The Wherry School  
Mark Unwin, CEO, Create Partnership Trust*

### 2C – Beech

#### Mythbusting mergers

Hear from a trust who have recently been through a merger process. Understand the pitfalls, how it actually looks, and what practical elements you need in place.

*Helen Winn, CEO,  
Wendy Munro, COO, Hope Sentamu Learning Trust*

### 2D – Cherry

#### Future proof your workforce

Stay ahead of the market by attracting, training, and equipping your team with current insights, practical solutions, and future predictions.

*Michael McCarthy, CEO, Consilium Academies  
Penny Swain, Education Talent Solutions Director, Supporting Education Group  
Tom Preston, Director, Thrive*

16:20 – 18:30 Informal time for networking and relaxation

18:30 – 19:30 Drinks reception in Cedar Bar and Cedar Lounge

19:30 – 22:00 Gala dinner with entertainment in Rosewood

## Friday 29 November 2024

08:45 – 09:20 Coffee and networking in exhibition space

### 09:20 – 10:00 Chair's welcome and educational trends

*Laura McInerney, Education Journalist and Co-Founder of Teacher Tapp*

### 10:00 – 10:30 School improvement at scale

Collaborate across your trust with clear lines of communication to ensure you're creating opportunities for conversations around improvement and capturing best practice.

*Martin Fitzwilliam, National Director of Primary, E-ACT*

10:30 – 10:40 Q&A using Slido, #oeMATs

10:40 – 11:15 Morning refreshments, networking, and exhibition

## 11:15 – 12:00 Workshop choices

### 3A – Rosewood

#### Enhance your trust culture

Hear practical examples of how a culture led approach can address inequity, leading to increased staff satisfaction, and gain an understanding of how bias works.

*David Watson, CEO, Sherborne Area Schools' Trust*

### 3B – Cherry

#### Centralise your estates team

Cut costs significantly by bringing your estates team in-house and create a more streamlined process.

*Michael McCarthy, CEO  
Nathan Millington, Head of Estates and Operations, Consilium Academies*

### 3C – Ash

#### Mechanics and dynamics: evolve your governance to optimise effectiveness

Develop effective MAT governance in line with the replacement of the governance handbook, and the introduction of a voluntary code.

*Mark Blois, Partner, Browne Jacobson  
Steve Hoddsman, Chair of the Board of Trustees, Delta Academies Trust*

### 3D – Beech

#### Effective mentoring

Deliver support to new or potential leaders to deepen their experience and improve your overall trust performance.

*Canon David Hermitt, Former Trust CEO, Senior Consultant, Enjoy Education Services*

### 12:00 – 12:30 Resilient organisations start with strong succession plans

Develop the next leaders in your trust so you can backfill in case of trust growth, promotion, departure, or absence.

*Jonny Uttley, CEO, The Education Alliance*

12:35 Networking lunch in exhibition space

# KEYSTONE

**Strategic and operational leadership support**



“The results speak for themselves, and Keystone are now very much part of our team.”

Tim Sutcliffe, CEO,  
Symphony Learning Trust

**Internal scrutiny**

**HR retainers**

**Trust growth**

**Interim finance and HR support**

**Your education management partner**

**[keystoneknowledge.com](https://www.keystoneknowledge.com)**

**01332 278032 | [hello@keystoneknowledge.com](mailto:hello@keystoneknowledge.com)**



# Conference calendar 2025

Optimus Education's conferences bring MAT leaders together, helping you go back to your trust ready to implement practical strategies and new policies that work.

## March 2025

### MAT Regional Networks

MARCH, NORTH WEST

Termly network meeting for C-Suite leaders hosted at The Oak Trust, Oldham.

#oeMATS

### SEND Update

12 MARCH, LONDON

Lead an inclusive school so all students can thrive.

#oeSEND

### Building a High Quality Trust

13 MARCH, LONDON

Embed your culture, deliver transformational impact and tackle your trust pressure points.

#oeMATS

### Building a High Quality Trust

20 MARCH, MANCHESTER

Embed your culture, deliver transformational impact and tackle your trust pressure points.

#oeMATS

## May 2025

### MAT Regional Networks

MAY, NORTH WEST

Termly network meeting for C-Suite leaders hosted at The Oak Trust, Oldham.

#oeMATS

### HR Update and People Strategy

20 MAY, LONDON

Understand how upcoming changes to HR and employment law affect you in education.

#oeHR

## June 2025

### Leading Safeguarding

12 JUNE, LONDON

Strengthen your safeguarding strategy and deliver safeguarding excellence daily.

#oeSafeguarding

### MAT Excellence in Action

19 JUNE, LONDON

Connect, collaborate and share excellence alongside trusts shortlisted for the MAT Excellence Awards.

#oeMATS

### MAT Excellence Awards

19 JUNE, LONDON

Nominations are now open for the 2025 awards and the submission deadline is 15 December 2025.

#MATExcellenceAwards

## November 2025

### MATs Summit

26 - 28 NOVEMBER, LEICESTERSHIRE

Make the most of time away together with your team, and drive the sector forwards, through the benefits of shared best practice and experience.

#oeMATS

Secure your place by 31 January 2025 and receive a 50% discount.

[Book your discounted place here](#)

Find out more at [optimus-education.com/conferences](https://optimus-education.com/conferences)

Contact us on **01823 792829** or  
[customer.services@optimus-education.com](mailto:customer.services@optimus-education.com)



# See every student



Nearpod is the most comprehensive instructional platform for delivering **engaging teaching and learning experiences that drive results**, supporting student growth and equitable learning opportunities. Here's what members of our community of **1.2 million educators** have to say about Nearpod's impact on teaching and learning\*:

"It's a win-win. Teachers save time, and students enjoy even more engaging and enriching lessons."  
**Graham Macaulay, LEO Academy Trust.**

◆ [Discover Nearpod's global impact](#)



Improves student engagement



Improves the in-person instructional experience



Helps students connect to the learning material



Reduces the number of tech tools

Empower every student to **learn and participate** and every teacher to **adapt and support**:

- ✓ Tools to make any presentation, PDF, or video interactive
- ✓ Create varied learning paths, enabling personalised feedback and helping students to learn at their own pace
- ✓ Real-time insights into student understanding



As part of the **Renaissance Ecosystem**, Nearpod delivers engaging instruction to accelerate growth and ensure that every student builds the skills needed to succeed.

Learn more at [renaissance.com](https://renaissance.com)

Discover how to bring Nearpod's solutions to your institution

[Learn more](#)



\*Based on the results of a 2023 Nearpod conducted survey of 1,025 responses from teachers and education leaders.



Giving trust leaders clarity  
on the things that matter most

**JUST LAUNCHED**

## Unlimited Surveys

FOR STAFF, PUPILS, AND PARENTS



**50+**

Customisable  
Templates



**350+**

Benchmark  
Questions

**Explore 50+ Survey Templates**

# Building a High-Quality Trust

13 Mar 2025 - 15 Hatfields, London

20 March 2025 - The Lowry Hotel, Manchester

'Another quality event which has given me lots of ideas and things to think about - thank you once again.'

CEO, CONSILIUM ACADEMIES

Engage effectively with the communities you serve.

- Reflect your strengths against the trust quality descriptors.
- Explore case studies on finance and sustained school improvement.
- Unpick the growth obstacles of other trusts to inform your journey.

Secure your place at London >>

Secure your place at Manchester >>



## Bespoke MAT consultancy

Our consultancy packages provide comprehensive support for your trust, and the schools within it. These packages include, but are not limited to:

- strategic MAT review
- safeguarding audit
- SEND review
- school improvement review
- external governance/trustee review
- pupil premium review
- curriculum review
- leadership supervision.

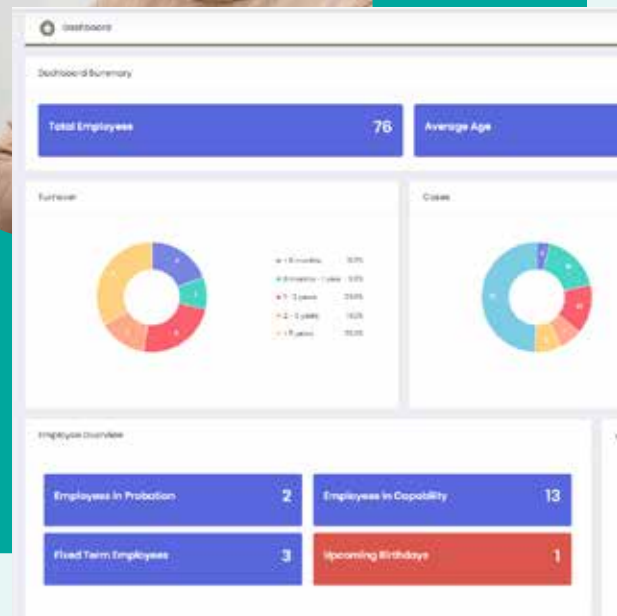
Find out more about our comprehensive consultancy packages at the Optimus Education stand today, or email [consultancy@optimus-education.com](mailto:consultancy@optimus-education.com).

Find out more >>



# The UK's fastest-growing education HR system

Designed by education HR specialists, SAMpeople helps over **1,800 schools and trusts** to understand, develop and support their staff with confidence and clarity every day.



Get complete visibility of your staff trust-wide



Roll-out consistent HR policies and processes



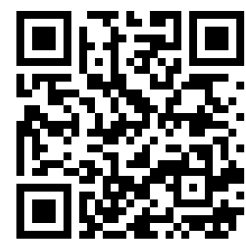
Help everyone self-serve with mobile friendly tools



Automate HR tasks and save hours every week

"The impact has been amazing. We are seeing change and we are seeing each school engaging with the systems. It's helping build an inclusive culture."

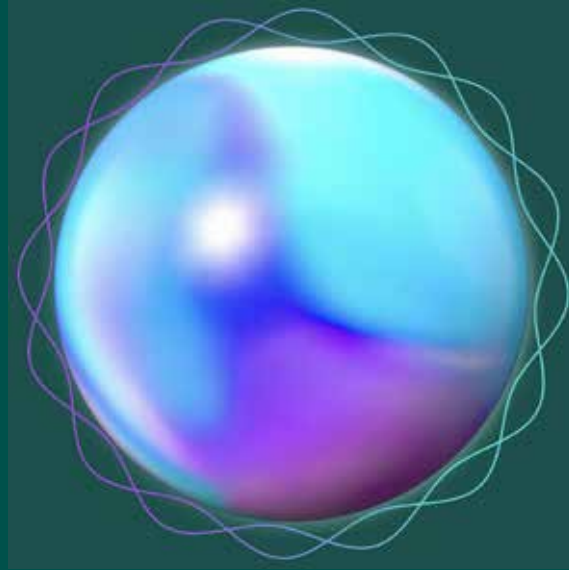
Sally Boaden  
Chief Finance & Operating Officer  
Raleigh Education Trust



**Book a demo**  
or visit us at our stand  
[www.sampeople.co.uk](http://www.sampeople.co.uk)



# Your **AI-powered** recruitment partner, bringing the future of education to life.



Hey, Gaia.  
Find 10 physics teachers in London.

AI Worker

Hi there!  
Let's get started.



# Take Control of Your MAT's People & Financial Strategies

Judicium's HR support and SBS Financial Planner can help you confidently make important financial decisions across your trust.

Access powerful tools and HR advice to optimise your resources and adapt to key variables like fluctuating pupil numbers.

## We can help you:

### Future proof your MAT and ensure sustainable operations

Select the best funding model, by comparing Top Slice and (GAG) Pooling options using our Scenario Planning tool to make data driven choices that suit your MAT's needs.

### Achieve flexible budgeting and accurate reporting

Automated budgeting reduces manual work for custom budget allocation. Manage funds effectively to support staffing and operational needs and track financial performance and benchmark across schools effortlessly.

### Align your people and finance strategies

Sound budgeting and financial planning will provide the foundation for your people strategy's recruitment and retention goals.

## Want to know more?

Visit us on our stand  
call: 0345 548 7000  
email: [enquiries@judicium.com](mailto:enquiries@judicium.com)  
[www.judiciumeducation.co.uk](http://www.judiciumeducation.co.uk)

In partnership with